

1 SLAB ANCHOR DETAILS
EXTREME CONDITIONS

| TANK INSIDE DIAMETER | MINIMUM BURY DEPTH | MIN. SPACE BETWEEN MULT. TANKS | SLAB ANCHOR SIDE PROJECTION | SLAB ANCHOR END PROJECTION | STRAP LENGTH IN INCHES | CABLE LENGTH (PER SIDE) |
|----------------------|--------------------|--------------------------------|-----------------------------|----------------------------|------------------------|-------------------------|
| 8' | 24" | 3' | 18" | 18" | 181" | 12' |
| 10' | 24" | 4' | 24" | 24" | 225" | 14' |
| 12' | 24" | 6' | 36" | 36" | 271" | 16' |
| 14' | 24" | 8' | 48" | 48" | 315" | 18' |

1 USE FULL SLAB ANCHOR IF GROUND WATER IS ANTICIPATED ABOVE SPRING LINE (EXTREME CONDITIONS).

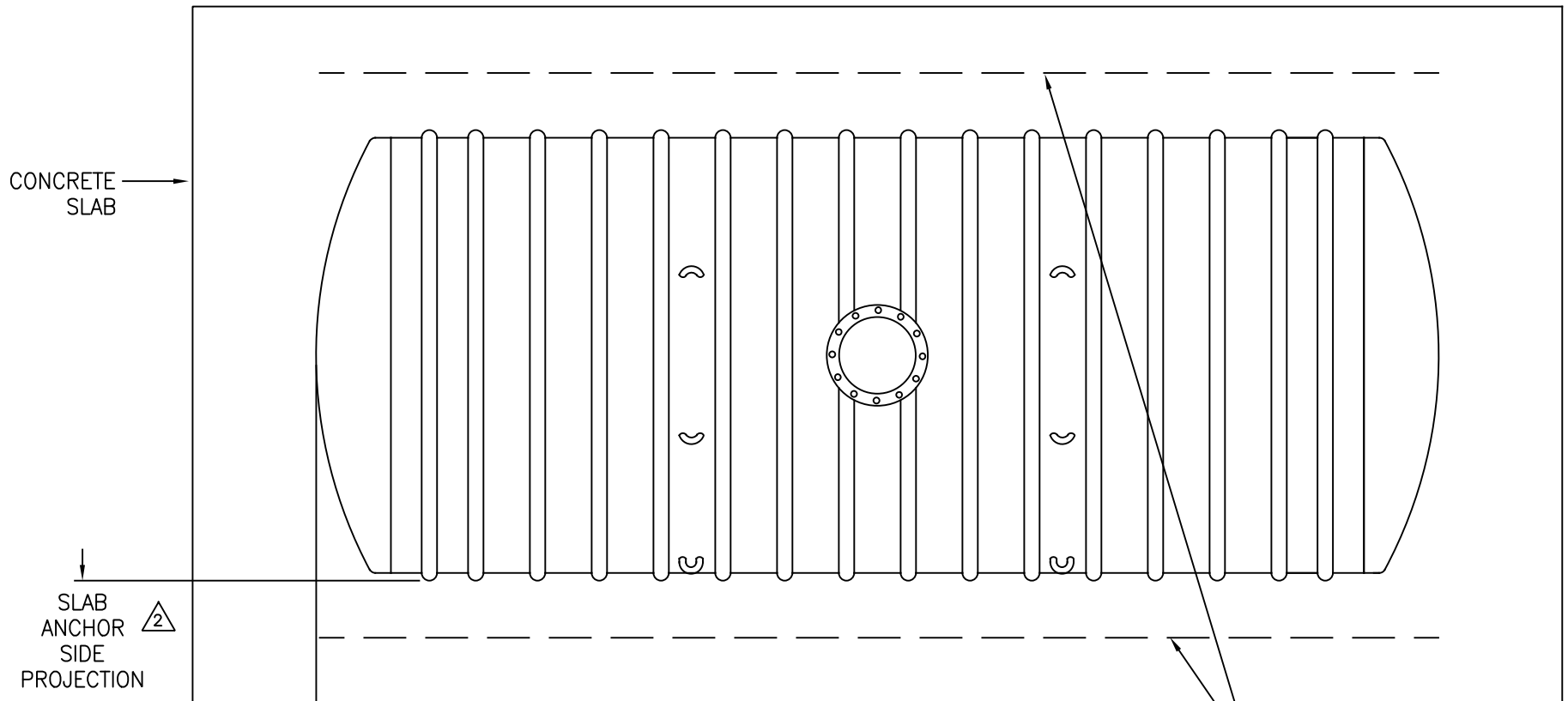
2 SEE SHEET 2 OF 2 FOR SIDE AND END PROJECTION DETAILS

IMPORTANT - NOT ALL TANKS REQUIRE ANCHORING.

NOT TO SCALE, FOR ILLUSTRATION ONLY

[Download DWG files HERE](#)

| | | |
|--|---------------------------------------|-----------------|
| Rev Date 01-03-22 | ANTI-FLOTATION SLAB ANCHOR DETAILS | Sheet 1 of 2 |
| DARCO INCORPORATED 800-232-8660 www.darcoinc.com | | |



△1 SLAB ANCHOR DETAILS
EXTREME CONDITIONS

LOCATE ANCHOR LUGS PER
YOUR QUOTE DRAWING
(also see Anti-Flotation
Slab Anchors sheet 1)

[Download DWG files HERE](#)

| TANK INSIDE DIAMETER | MINIMUM BURY DEPTH | MIN. SPACE BETWEEN MULT. TANKS | △2 SLAB ANCHOR SIDE PROJECTION | △3 SLAB ANCHOR END PROJECTION | STRAP LENGTH IN INCHES | CABLE LENGTH (PER SIDE) |
|----------------------------|--------------------------|--------------------------------------|---|-------------------------------------|---------------------------|----------------------------|
| 8' | 24" | 3' | 18" | 18" | 181" | 12' |
| 10' | 24" | 4' | 24" | 24" | 225" | 14' |
| 12' | 24" | 6' | 36" | 36" | 271" | 16' |
| 14' | 24" | 8' | 48" | 48" | 315" | 18' |

△1 USE FULL SLAB ANCHOR IF GROUND WATER IS ANTICIPATED ABOVE SPRING LINE (EXTREME CONDITIONS).

IMPORTANT – NOT ALL TANKS REQUIRE ANCHORING.

NOT TO SCALE, FOR ILLUSTRATION ONLY

| | | |
|--|---------------------------------------|-----------------|
| DARCO INC UNDERGROUND TANKAGE | | |
| Rev Date 06-13-20 | ANTI-FLOTATION SLAB ANCHOR DETAILS | Sheet 2 of 2 |
| DARCO INCORPORATED 800-232-8660 www.darcoinc.com | | |