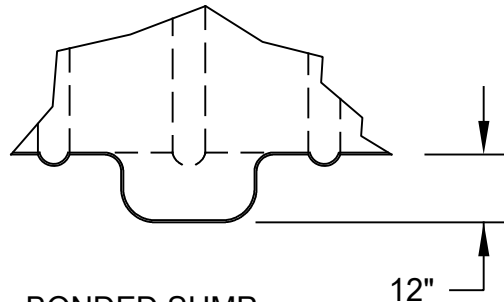
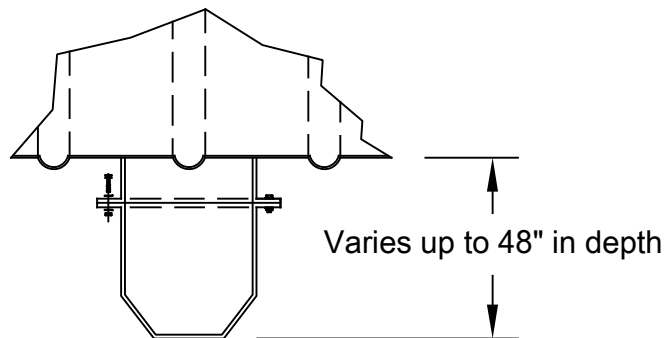


SUMPS FOR TANKS



BONDED SUMP

Bonded sumps are 12" deep and permanently attached to the tank. They are available in 24" and 30" diameters



BOLTED SUMP

Bolt-on sumps are typically used with vertical turbine style fire service pumps and are available in 24" and 30" diameters.

Allow 12" below the suction strainer and submerge at least two impeller stages below the tank floor when calculating shaft length.

[Download DWG files HERE](#)